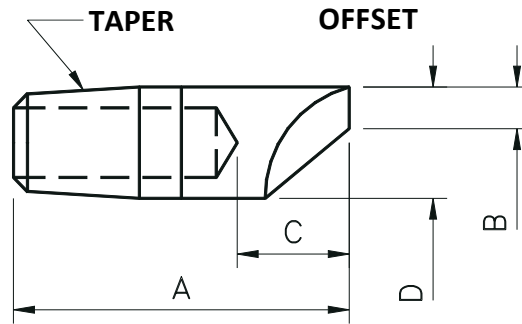




Email: Tipaloy@Tipaloy.com Phone: 313-875-5145 Web: www.Tipaloy.com

## OFFSET ELECTRODES

| EXAMPLE OF PART CODING: |                |          |                  |
|-------------------------|----------------|----------|------------------|
| TIPALOY                 |                | R.W.M.A. |                  |
| 0                       | = POINTED NOSE | D        | = "D" NOSE       |
| 2                       | = #5RW TAPER   | 02       | = CLASS 2 COPPER |
| 250                     | = 2.50" LONG   | 5        | = #5RW TAPER     |
|                         |                | 10       | = LENGTH IN 1/4" |



|       | CLASS 2 |        | CLASS 1    |        | CLASS 3    |        | OVERALL | WELD | FACE TO | MAJOR |
|-------|---------|--------|------------|--------|------------|--------|---------|------|---------|-------|
|       | #130    | RWMA   | #100       | RWMA   | #200       | RWMA   | LENGTH  | FACE | WATER   | DIA.  |
| TAPER | CODE    | CODE # | CODE       | CODE # | CODE       | CODE # | A       | DIA. | HOLE    | D     |
|       | 01-100  | D02404 | 01-100-100 | D01404 | -          | -      | 1       |      |         |       |
|       | 01-125  | D02405 | 01-125-100 | D01405 | 01-125-200 | D03405 | 1-1/4   |      |         |       |
|       | 01-150  | D02406 | 01-150-100 | D01406 | 01-150-200 | D03406 | 1-1/2   |      |         |       |
| 4 RW  | 01-175  | D02407 | 01-175-100 | D01407 | 01-175-200 | D03407 | 1-3/4   |      |         |       |
| OR    | 01-200  | D02408 | 01-200-100 | D01408 | 01-200-200 | D03408 | 2       |      |         |       |
| # 1MT | 01-225  | D02409 | 01-225-100 | D01409 | 01-225-200 | D03409 | 2-1/4   | 3/16 | 1/2     | .482  |
|       | 01-250  | D02410 | 01-250-100 | D01410 | 01-250-200 | D03410 | 2-1/2   |      |         | OR    |
|       | 01-275  | D02411 | 01-275-100 | D01411 | 01-275-200 | D03411 | 2-3/4   |      |         | .500  |
|       | 01-300  | D02412 | 01-300-100 | D01412 | 01-300-200 | D03412 | 3       |      |         |       |
|       | 01-325  | D02413 | 01-325-100 | D01413 | 01-325-200 | D03413 | 3-1/4   |      |         |       |
|       | 01-350  | D02414 | 01-350-100 | D01414 | 01-350-200 | D03414 | 3-1/2   |      |         |       |
|       | 01-375  | D02415 | 01-375-100 | D01415 | 01-375-200 | D03415 | 3-3/4   |      |         |       |
|       | 01-400  | D02416 | 01-400-100 | D01416 | 01-400-200 | D03416 | 4       |      |         |       |
|       | 02-125  | D02505 | 02-125-100 | D01505 | 02-125-200 | D03505 | 1-1/4   |      |         |       |
|       | 02-150  | D02506 | 02-150-100 | D01506 | 02-150-200 | D03506 | 1-1/2   |      |         |       |
|       | 02-175  | D02507 | 02-175-100 | D01507 | 02-175-200 | D03507 | 1-3/4   |      |         |       |
|       | 02-200  | D02508 | 02-200-100 | D01508 | 02-200-200 | D03508 | 2       |      |         |       |
| 5 RW  | 02-225  | D02509 | 02-225-100 | D01509 | 02-225-200 | D03509 | 2-1/4   |      |         |       |
| OR    | 02-250  | D02510 | 02-250-100 | D01510 | 02-250-200 | D03510 | 2-1/2   | 1/4  | 3/4     | .625  |
| # 2MT | 02-275  | D02511 | 02-275-100 | D01511 | 02-275-200 | D03511 | 2-3/4   |      |         |       |
|       | 02-300  | D02512 | 02-300-100 | D01512 | 02-300-200 | D03512 | 3       |      |         |       |
|       | 02-325  | D02513 | 02-325-100 | D01513 | 02-325-200 | D03513 | 3-1/4   |      |         |       |
|       | 02-350  | D02514 | 02-350-100 | D01514 | 02-350-200 | D03514 | 3-1/2   |      |         |       |
|       | 02-375  | D02515 | 02-375-100 | D01515 | 02-375-200 | D03515 | 3-3/4   |      |         |       |
|       | 02-400  | D02516 | 02-400-100 | D01516 | 02-400-200 | D03516 | 4       |      |         |       |
|       | 06-200  | D02608 | 06-200-100 | D01608 | 06-200-200 | D03608 | 2       |      |         |       |
| 6 RW  | 06-250  | D02610 | 06-250-100 | D01610 | 06-250-200 | D03610 | 2-1/2   | 9/32 | 3/4     | .750  |
|       | 06-300  | D02612 | 06-300-100 | D01612 | 06-300-200 | D03612 | 3       |      |         |       |
|       | 03-200  | D02708 | 03-200-100 | D01708 | 03-200-200 | D03708 | 2       |      |         |       |
| OR    | 03-250  | D02710 | 03-250-100 | D01710 | 03-250-200 | D03710 | 2-1/2   | 5/16 | 3/4     | .875  |
| # 3MT | 03-300  | D02712 | 03-300-100 | D01712 | 03-300-200 | D03712 | 3       |      |         |       |
|       | 03-400  | D02716 | 03-400-100 | D01716 | 03-400-200 | D03716 | 4       |      |         |       |