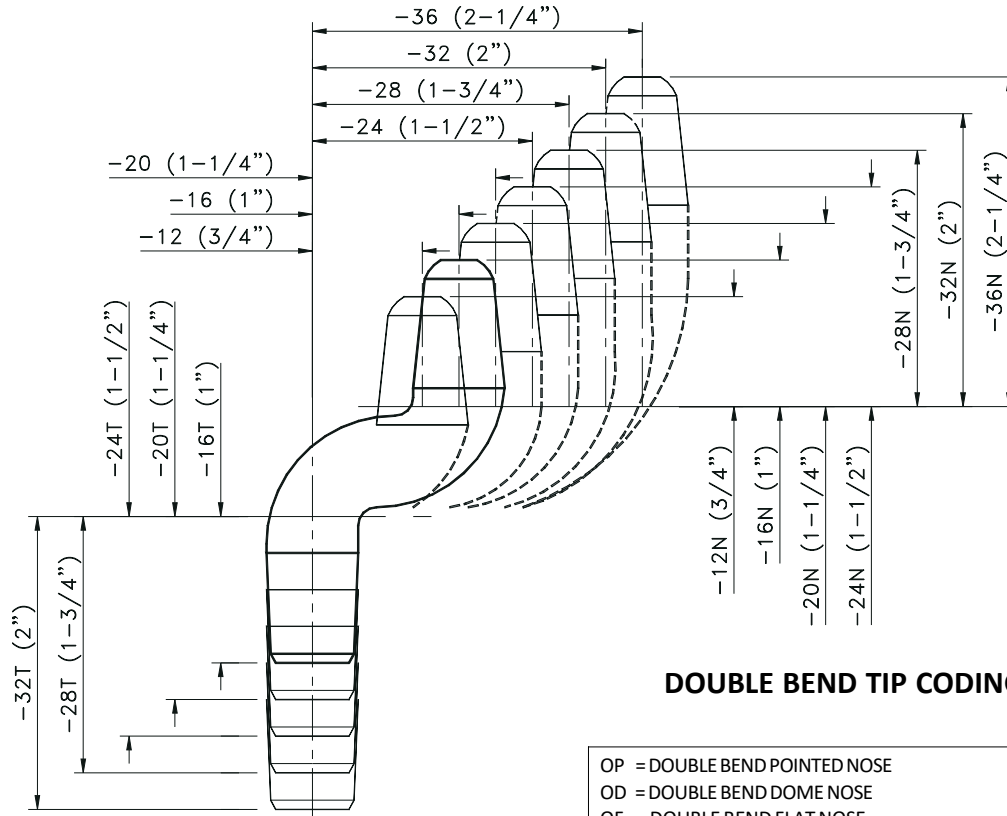




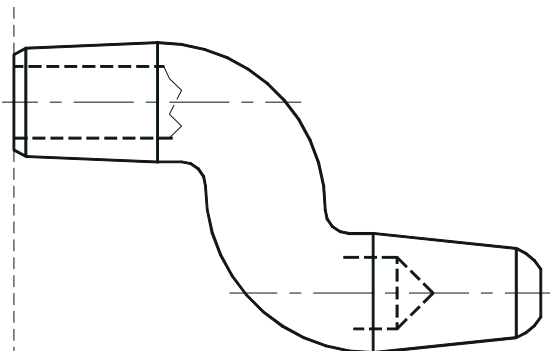
Email: Tipaloy@Tipaloy.com Phone: 313-875-5145 Web: www.Tipaloy.com

DOUBLE BEND TIPS

Please call our order desk and ask about the many standard double and single bend tips in stock or determine your exact requirement using the coding shown below. You may also use the chart on this page to measure the nose, taper, overall length, and offset of the double bend tips you currently use.



Minimum Overall Length = Nose Length + Taper Length + Body Diameter. Maximum Offset = 2-1/2"



DOUBLE BEND TIP CODING

OP	= DOUBLE BEND POINTED NOSE
OD	= DOUBLE BEND DOME NOSE
OF	= DOUBLE BEND FLAT NOSE
OO	= DOUBLE BEND OFFSET NOSE
OR	= DOUBLE BEND RADIUS NOSE (SPECIFY RADIUS*)
1	= ALLOY SPECIFICATION (1 =RWMA CLASS 1)
2	= ALLOY SPECIFICATION (2 =RWMA CLASS 2)
3	= ALLOY SPECIFICATION (3 =RWMA CLASS 3)
4	= TAPER SPECIFICATION (4 =#4 RW TAPER)
5	= TAPER SPECIFICATION (5 =#5 RW TAPER)
6	= TAPER SPECIFICATION (6 =#6 RW TAPER)
7	= TAPER SPECIFICATION (7 =#7 RW TAPER)
3	= LENGTH IN 1 INCH INCREMENTS
14	= FRACTIONAL LENGTH IN 1/16" INCREMENTS
16	= OFFSET IN 1/16" INCREMENTS
20N	= NOSE LENGTH IN 1/16" INCREMENTS
24T	= TAPER LENGTH IN 1/16" INCREMENTS
EXAMPLE: OP-14314-16-20N-24T	
* FOR RADIUS NOSE, ADD THE REQUIRED RADIUS TO THE END OF THE PART NUMBER. (3 = 3" SPHERICAL RADIUS)	

- 1/2" -----
- 1" -----
- 1-1/2" -----
- 2" -----
- 2-1/2" -----
- 3" -----
- 3-1/2" -----
- 4" -----
- 4-1/2" -----
- 5" -----
- 5-1/2" -----
- 6" -----