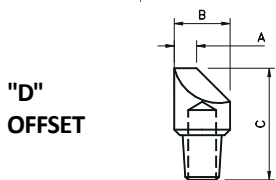
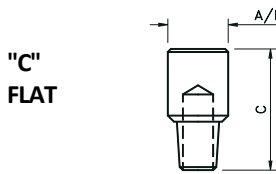
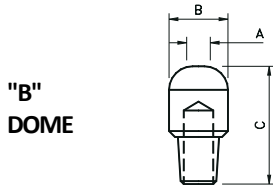
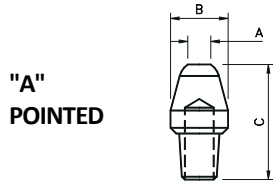
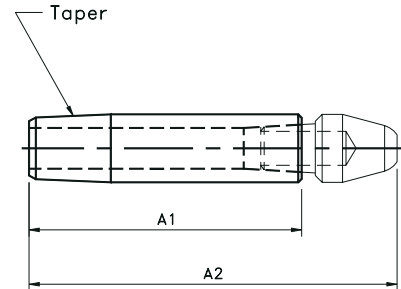
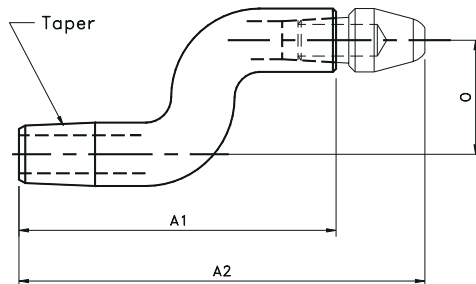


MALE CAP TIPS AND SHANKS



TAPER	ALLOY #100 CLASS 1	ALLOY #130 CLASS 2	ALLOY #Z169 Zr/Cu.	ALLOY #200 CLASS 3	WELD FACE DIA. A	MAJOR DIA. B	OVERALL LENGTH C
"A" Nose (Pointed)							
4 RWMC	CA-14	CA-24	CA-Z4	CA-34	3/16	1/2	1-1/8
5 RWMC	CA-15	CA-25	CA-Z5	CA-35	1/4	5/8	1-1/4
7 RWMC	-	CA-27	-	-	5/16	7/8	1-5/8
"B" Nose (Dome)							
4 RWMC	CB-14	CB-24	CB-Z4	CB-34	3/16	1/2	1-1/8
5 RWMC	CB-15	CB-25	CB-Z5	CB-35	1/4	5/8	1-1/4
7 RWMC	-	CB-27	-	-	5/16	7/8	1-5/8
"C" Nose (Flat)							
4 RWMC	CC-14	CC-24	CC-Z4	CC-34	1/2	1/2	1-1/8
5 RWMC	CC-15	CC-25	CC-Z5	CC-35	5/8	5/8	1-1/4
7 RWMC	-	CC-27	-	-	7/8	7/8	1-5/8
"D" Nose (Offset)							
4 RWMC	CD-14	CD-24	CD-Z4	CD-34	3/16	1/2	1-1/8
5 RWMC	CD-15	CD-25	CD-Z5	CD-35	1/4	5/8	1-1/4
7 RWMC	-	CD-27	-	-	5/16	7/8	1-5/8



5 RW Taper Code No. Alloy #130	Shank Length A1	Ass'y Length A2	Tip Offset O
OS-2528-4	2-1/2	3-1/4	1/4
OS-2528-8	2-1/2	3-1/4	1/2
OS-2534-16	3-1/4	4	1
OS-25212-20	2-3/4	3-1/2	1-1/4
OS-25312-24	3-3/4	4-1/2	1-1/2
OS-25212-28	2-3/4	3-1/2	1-3/4
OS-25314-40	3-7/8	4-5/8	2-1/2
OS-2534-32	3-1/4	4	2

4 RW TAPER (#1MT)	5 RW TAPER #2MT)	SHANK LENGTH A1	ASSY. LENGTH A2
CS-245	CS-255	1-1/4	2
CS-246	CS-256	1-1/2	2-1/4
CS-247	CS-257	1-3/4	2-1/2
CS-248	CS-258	2	2-3/4
CS-249	CS-259	2-1/4	3
CS-2410	CS-2510	2-1/2	3-1/4
CS-2411	CS-2511	2-3/4	3-1/2
CS-2412	CS-2512	3	3-3/4
CS-2413	CS-2513	3-1/4	4