

WELDING GUN CYLINDER HOLDER COMPONENTS

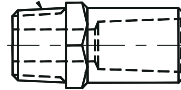
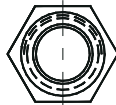
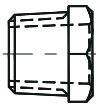
WELD GUN CYLINDER COMPONENTS

ELECTRODE ADAPTER SELECTION CHART

Adapter Length
7/8
1
1-1/4
1-3/8
1-1/2
2
2-1/2
3

T-101 size Adapters 1/2" NPT	
4 RW Taper	5 RW Taper
AP-H24B-7	AP-H25B-7
AP-H24B-8	AP-H25B-8
AP-H24B-10	AP-H25B-10
-	-
AP-H24B-12	AP-H25B-12
AP-H24B-16	AP-H25B-16
AP-H24B-20	AP-H25B-20
AP-H24B-24	AP-H25B-24

T-102 Size Adapters 3/4" NPT	
6 RW Taper	7 RW Taper
-	-
-	-
-	-
AP-H36D-11	AP-H37D-11
AP-H36D-12	AP-H37D-12
AP-H36D-16	AP-H37D-16
AP-H36D-20	AP-H37D-20
AP-H36D-24	AP-H37D-24

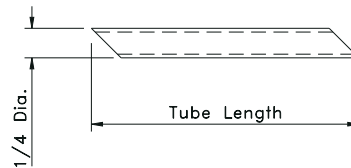
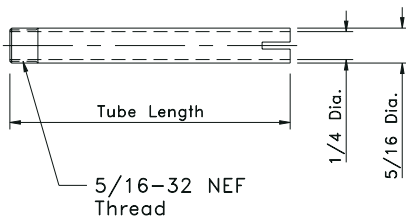


STATIONARY WATER TUBES

Part Number	Length
DS-5-3	3/4
DS-5-4	1
DS-5-5	1-1/4
DS-5-6	1-1/2
DS-5-8	2
DS-5-10	2-1/2

SLIDING WATER TUBES

Part Number	Length
DF-4-4	1
DF-4-5	1-1/4
DF-4-6	1-1/2
DF-4-8	2
DF-4-10	2-1/2
DF-4-12	3
DF-4-16	4



HOW TO ORDER:

T-101 Tubes for use with 4 RW Adapters -

ORDER STATIONARY TUBE AT LEAST 1/4" SHORTER THAN ADAPTER LENGTH.

T-101 Tubes for use with 5 RW Adapters -

ORDER STATIONARY TUBE 1/2" LONGER THAN ADAPTER FOR TUBE TO BE FLUSH.

T-102 Tubes for use with 6 RW or 7 RW Adapters -

ORDER STATIONARY TUBE 3/4" LONGER THAN ADAPTER FOR TUBE TO BE FLUSH.

SLIDING TUBES SHOULD BE ORDERED AT LEAST 1/2" LONGER THAN WATER HOLE DEPTH OF TIP BEING USED.