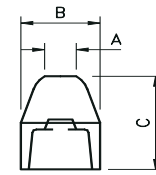
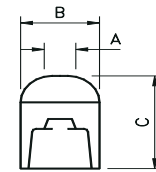


FEMALE CAP TIPS

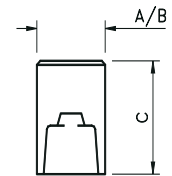
RWMA Female Cap Tape	Alloy #130 Class 2	Alloy Z#169 Zirc. Cu.	Alloy "G" Glidcop	Weld Face A	Major Diameter B	Overall Length C
"A" Nose (Pointed)						
4 RW	CAF-24	CAF-Z4	CAF-G4	3/16	1/2	0.84
5 RW	CAF-25	CAF-Z5	CAF-G5	1/4	5/8	0.88
6 RW	CAF-26	CAF-Z6	CAF-G6	9/32	3/4	1
"B" Nose (Dome)						
4 RW	CBF-24	CBF-Z4	CBF-G4	3/16	1/2	0.84
5 RW	CBF-25	CBF-Z5	CBF-G5	1/4	5/8	0.88
6 RW	CBF-26	CBF-Z6	CBF-G6	9/32	3/4	1
"C" Nose (Flat)						
4 RW	CCF-24	CCF-Z4	CCF-G4	1/2	1/2	0.84
5 RW	CCF-25	CCF-Z5	CCF-G5	5/8	5/8	0.88
6 RW	CCF-26	CCF-Z6	CCF-G6	3/4	3/4	1
"D" Nose (Offset)						
4 RW	CDF-24	CDF-Z4	CDF-G4	3/16	1/2	0.84
5 RW	CDF-25	CDF-Z5	CDF-G5	1/4	5/8	0.88
6 RW	-	-	-	9/32	3/4	1



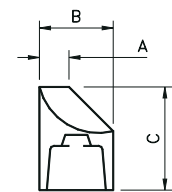
CAF (POINTED)



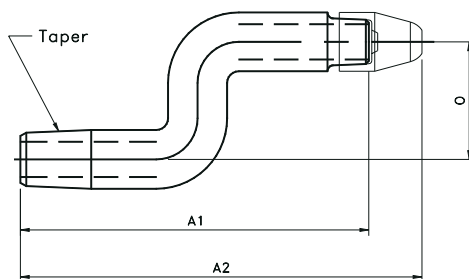
CBF (DOME)



CCF (FLAT)

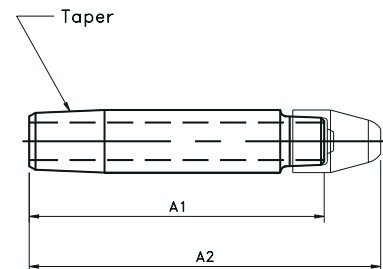


CDF (OFFSET)



OFFSET FEMALE CAP SHANKS

5 RW Taper Code No. Alloy #130	Shank Length A1	Ass'y Length A2	Tip Offset O
OSF-2511-8	2-3/4	3-1/4	1/2
OSF-2511-12	2-3/4	3-1/4	3/4
OSF-2511-16	2-3/4	3-1/4	1
OSF-2513-8	3-1/4	3-3/4	1/2
OSF-2514-16	3-1/2	4	1
OSF-2515-20	3-3/4	4-1/4	1-1/4



STRAIGHT FEMALE CAP SHANKS

4RW Taper (#1 MT)	5RW Taper (#2 MT)	Shank Length A1	Ass'y Length A2
CSF-246	CSF-256	1-1/2	2
CSF-248	CSF-258	2	2-1/2
CSF-2410	CSF-2510	2-1/2	3
CSF-2412	CSF-2512	3	3-1/2
CSF-2414	CSF-2514	3-1/2	4
CSF-2416	CSF-2516	4	4-1/2

FEMALE CAP TIPS AND SHANKS